

Installation Manual



<http://anchorfree.com/support>

Table of Contents	Page
1. Getting Started	3
2. Installation	4
3. Configuration	5
4. Administration	7
5. Activation	7
6. FAQ	8
 Figures	
Figure 1: Router Connection Points	4
Figure 2: Connection URL	5
Figure 3: Home Screen	6
Figure: 4: Configuration Screen	6
Figure 5: Wireless Configuration Screen	7

1. Getting Started

System Requirements:

- A high speed (broadband) Internet connection
- A computer

Router Package contents:

- Wall mount with screws
- AnchorFree Router
- Ethernet Cable
- Antenna
- Vertical Stand
- 5V Buffalo Power Supply

Important Internet Service Provider (ISP) information:

Please collect the following information about your internet service provider before starting. This information can be found in the documentation packet your ISP provided when you signed up for the service.

If You Connect Via:	You Probably Use:	Please Record:
Cable Modem or DSL with Router	DHCP	No additional information is required.
Home DSL	PPPOE	User Name: _____ Password: _____ <i>Note: Your ISP may require your username in the format: name@ISPname.com</i>
T1 via Static Broadband, Cable or DSL with a Static IP Address	Static IP	IP Address: _____ Subnet Mask: _____ Default Gateway (router address): _____ Primary DNS: _____ Secondary DNS (optional) _____
Telephone Dial-in to a Server	PPTP	You cannot make use of router because your system does not meet minimum system requirements.

AnchorFree Affiliate Account Information:

Make sure that you have an AnchorFree Affiliate account. In most cases, an Affiliate Account has already been created for you. Unless you requested that one not be created, check to make sure that you have one at <http://affiliates.anchorfree.com>. An Affiliate Account allows you to track revenue generated by the AnchorFree Router as well as create activation codes for future devices. If you do not have it, sign up for one. The default username/password for your Affiliate Account will be the email address you provided when you signed up for this account.

2. Installation

Setup Location: Start out by finding a place to set up your new AnchorFree router. Here are some things to consider when choosing a location:

- You'll need to be in reach of the modem/router to which the AnchorFree router will be connected. You'll also need a power outlet.
- To optimize the signal strength of the router, place it in a central open location. Placing router behind a wall or other obstruction will lessen the signal quality.
- The higher the AnchorFree router is placed, the better the signal quality.
- Attach the antenna that comes with the AnchorFree router. This will improve your signal quality.

IF Connecting to a BROADBAND MODEM:

- Unplug your DSL/Cable Modem
- Using the provided Ethernet cable, plug one end into the modem and the other into the WAN Port of the AnchorFree router
- Plug in the power for the AnchorFree router
- Plug in the power for the DSL/Cable Modem

IF Connecting to ANOTHER ROUTER:

- First make sure that "DHCP" is enabled on your other router. See the user manual for that router if you need help in enabling this DHCP.
- Using the Ethernet cable, plug one end into the WAN port on the AnchorFree router and the other into one of the LAN ports on your other router.
- Plug in the power adapter for the AnchorFree router

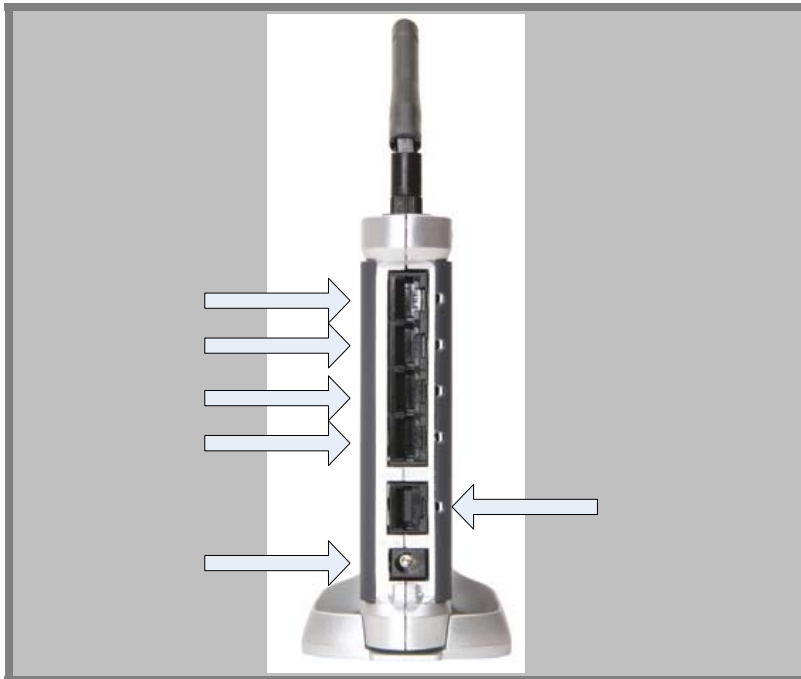


Figure 1. Router Connection Points

3. Configuration

Connecting: You'll need to connect to the AnchorFree Router either through the wireless signal or through one of the 4 LAN ports. If you connect to the AnchorFree router using your computer's wireless network card please connect to the default SSID "AnchorFree". Remember any changes to the SSID, type of signal, and encryption settings, you will need to reconnect to the router.

Configuration Page: Enter `http://192.168.5.1` into your internet browser (Internet Explorer, Firefox, etc) and hit enter to go to the web interface for the AnchorFree Router.



Figure 2: Connection URL

Success: The default user name and password for the router configuration page follow:

- Username: admin
- Password: admin

Note: Please change your default password so that your users don't have access

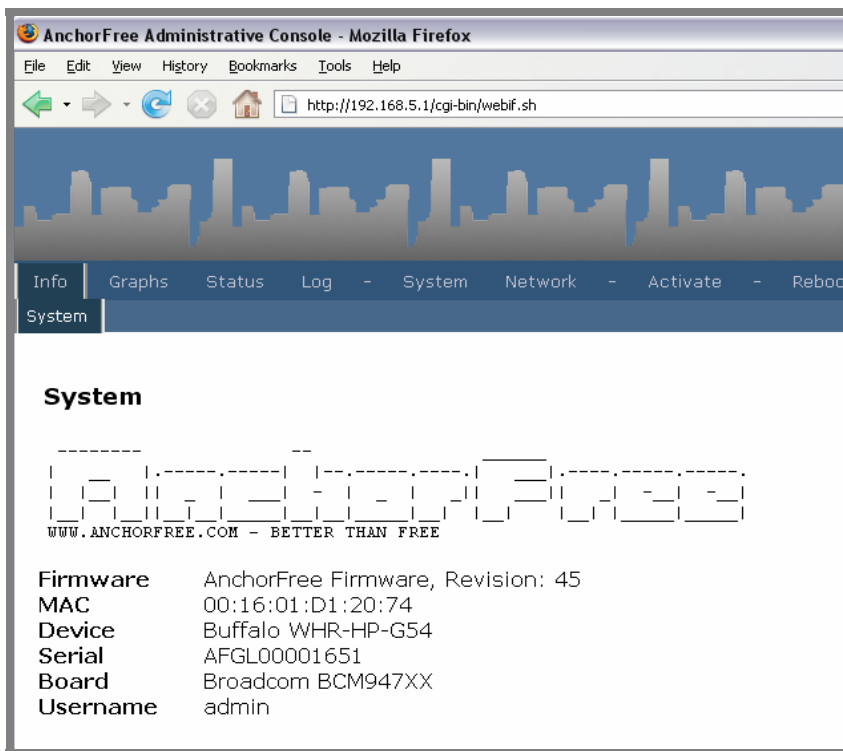


Figure 3: Home Screen

Connection Type: Depending on your connection type required by your ISP, please select your connection type in the web interface under the network menu option. Each option will list different fields to enter in address information.

Note: LAN configuration fields do not need to be altered for initial setup and default gateway is to be left blank.

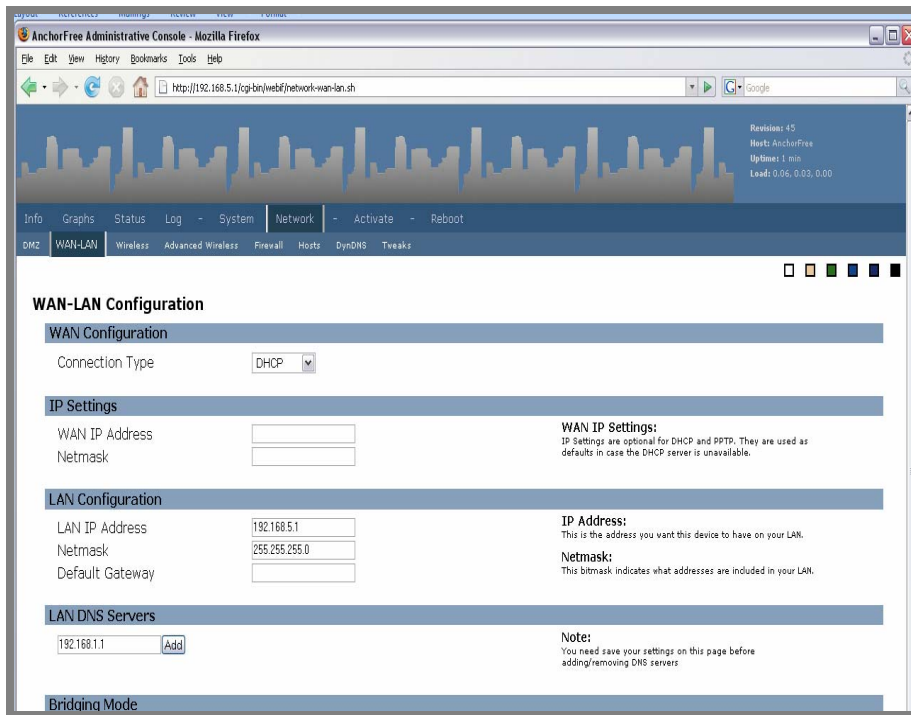


Figure 4: Configuration Screen

Wireless Configuration:

- Change ESSID
- Wireless Mode
 - Wireless B signal mode is the default, older signal type.
 - Wireless G signal mode is a new signal type that is faster than B.
- Encryption Type:
 - WEP requires hex characters
 - WPA uses a pass phrase; offers better security and is faster

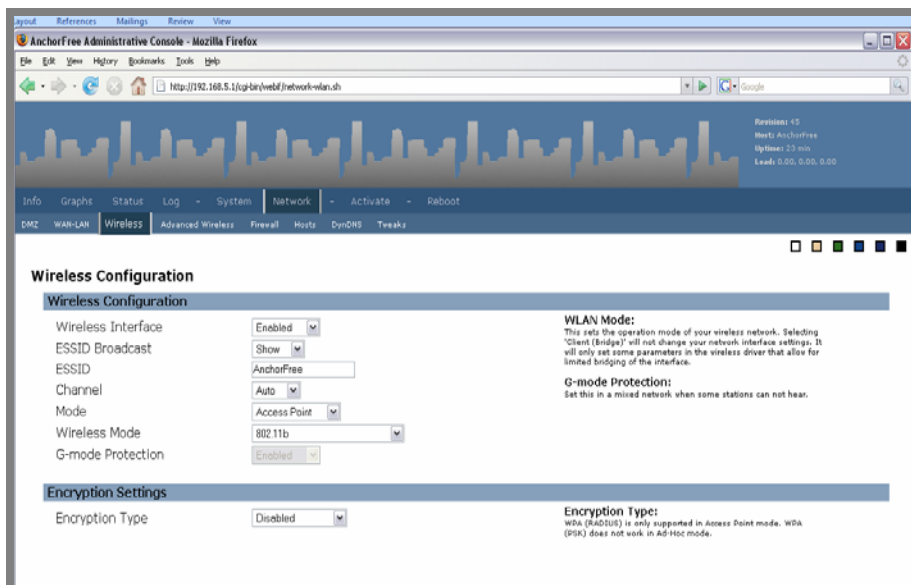


Figure 5: Wireless Configuration Screen

4. Administration

Administration Options:

- ADMINISTRATIVE PASSWORD: Change the default password for access to the AnchorFree router. Be sure to make a note of your new password!
- BLACKLIST: Create a list of websites that you wish not to see ads on by adding their specific URL.
- SPLASH PAGE PROXY SETTINGS: Enter the preferred website you would like new users to see when they connect to the AnchorFree Router.

Note: Please note that you must click "Save Settings" in order to apply your selected settings.

5. Activation

If Already Activated. Unless you specifically requested otherwise, your router should have been activated before it was shipped to you. If so, there is nothing left for you to do.

If Not Yet Activated. Go to <http://affiliates.anchorfree.com> and add a new hotspot. Please see how to add a new hotspot from the affiliate documentation.

6. FAQ

- Problem:** I can't connect to the Internet, but I can still receive emails through Outlook or other email clients!

Possible solution: Problem could be caused by a problem with the DNS that was entered in the Static IP settings. Please double check to make sure you entered the correct DNS IP address.

- Problem:** I don't see any ads!

Possible solution: If you have connected the AnchorFree Router to your existing router please check that you are connected to the AnchorFree Router (Default SSID AnchorFree). Make sure you have disabled the wireless signal on your existing router. This will prevent users from connecting to the wrong router

- Problem:** I can't find the AnchorFree Router Web interface!

Possible Solution: Check the connection settings on your computer. Make sure that your IP address starts with 192.168.5.xx. The LAN IP settings may have been incorrectly entered.

- Problem:** I can't connect to the Internet!

Possible Solution: Try resetting the modem and router by unplugging each for thirty seconds before plugging them back in. If the problem persists, renew the connection on your computer by first disabling and then enabling your wireless card.

- Problem:** My wireless signal drops the connection!

Possible solution: This could be caused by interference from another devices operating at the same 2.4 GHz frequency, or by a structure that is interfering with the signal. If there is another wireless device within range, move the AnchorFree router further away from the other device; or remove the other device altogether. If there is no other wireless device within range, move the AnchorFree router to an area with less structural interference. Remember that higher is better for your wireless signal.

- Problem:** I am still having problems getting connected, who can I contact for help?

Possible Solution: Go to anchorfree.com/support , create a trouble ticket and we will have a technician get back to as soon as possible.

- o Brief description of problem
- o What devices are on your network(i.e., other routers, modems,)
- o Your ISP and type of internet service (i.e., static IP or dhcp)

- Problem:** I've tried all of the above solutions but I'm still having problems. What can I do?

Possible Solution: Your system may not be compatible with our router. Although our device is compatible with most of today's standard network equipment, there are some exceptions. If this applies to your system, you may wish to return your device to AnchorFree.

-- End of AnchorFree Hotspot Router Installation Manual --